

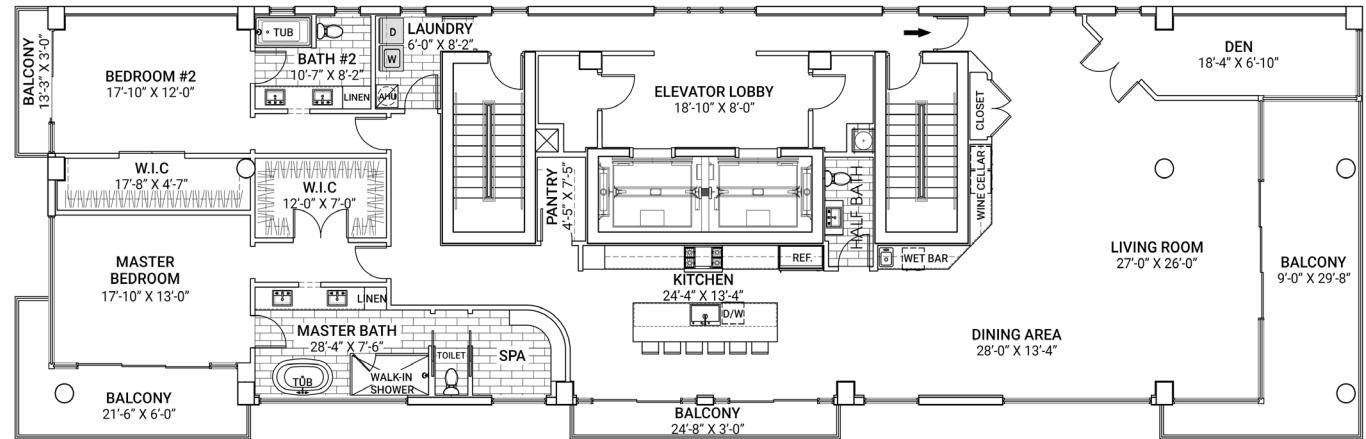
Estate Unit

Bedrooms: 2 Plus Den

Bathrooms: 2.5

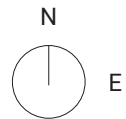
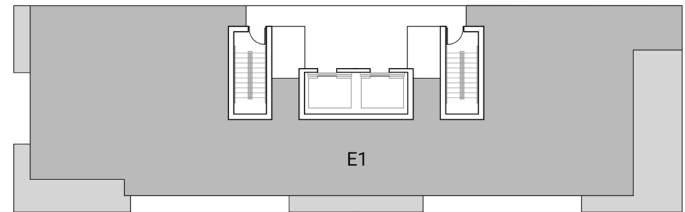
Total A/C Area: 3,320

Outdoor Space: 609



ESTATE UNIT FLOOR PLAN

Select your unit



BROKER PARTICIPATION WELCOME AND ENCOURAGED. ORAL REPRESENTATIONS CANNOT BE RELIED UPON AS CORRECTLY STATING REPRESENTATIONS OF THE DEVELOPER. FOR CORRECT REPRESENTATIONS, MAKE REFERENCE TO THIS BROCHURE AND TO THE DOCUMENTS REQUIRED BY SECTION 718.503, FLORIDA STATUTES, TO BE FURNISHED BY A DEVELOPER TO A BUYER OR LESSEE. This project has been filed in the state of Florida and no other state. This is not an offer to sell or solicitation of offers to buy the condominium units in states where such offer or solicitation cannot be made. Artistic conceptual rendering. Any specifications in this depiction may change at the developer's sole discretion without notice. The features, plans and specifications described above are proposed only, and the developer reserves the right to modify, revise or withdraw any or all of the same at its sole discretion and without prior notice. Without limiting the generality of the foregoing, developer reserves the right to substitute any of the foregoing with items of similar or better value, in developer's opinion. Views shown cannot be relied upon as the actual view from a particular unit within the condominium. Prospective purchasers should be aware that any view from the condominium property may be limited or eliminated. Please see the declaration for condominium for more information when they become available. Prices and availability are subject to change at any time without notice.

